



City Council Meeting

Park System Updates

November 21, 2017



Park System Master Plan

Why a park system plan is important

- Active living needs of the community are changing
 - Planning improves understanding of current needs
 - Planning assists in evaluation of priorities
- Provides a framework and vision for the next 20+ years
 - Allows city resources to be used more efficiently
 - Provides support to seek funds from outside sources

Principles guiding this planning process

- Design to minimize ongoing maintenance costs
 - Recognize we can't offer every amenity in every park
 - Group higher maintenance items into larger parks
 - Remove high maintenance amenities from smaller parks
- Reduce quantity of lesser used facilities
- Modify / add amenities to better meet current needs
- Promote both active and passive use of the parks

Planning Process

1. Inventory of Existing Amenities
2. Comparison to National Standards
3. Meetings with Focus Groups / Commission
4. Place Parks into Categories
5. Develop Early Concept Maps of Larger Parks
6. Refine Concept Maps of Larger Parks
7. Create the Park System Master Plan Document



Public Input Throughout the Planning Process



Planning Process

*Dialog with the community has been an important part of the process.
Materials from past discussions is available below.:*

- [September 13 - MAC Park Public Open House](#)
- [September 6 - Welcome Park Neighborhood Meeting](#)
- [August 9 - Public Open House](#)
- [August 2 - North Lions Neighborhood Meeting](#)
- [July 13 - City Council Work Session](#)
- [July 12 - Bassett Creek Neighborhood Meeting](#)
- [June 7 - Becker Park Neighborhood Meeting](#)
- [April/May - Community Event Posters](#)
- [April 19 - City Council Meeting](#)
- [April 5 - Park & Recreation Commission Meeting](#)
- [March 14 - Public Open House](#)
- [March 14 - MAC Park Public Open Meeting](#)
- [February 15-17 - Focus Group Meetings \(12\)](#)
- [December 1 - Winterfest](#)
- [November, 2016 Project kick-off board](#)
- [June 2, 2016 - Becker Park Visioning](#)

Join the
Discussion

Contact:
Crystal Recreation
763-531-0052
Email

Media Reports on the Master Planning Process

- [Sun Post 9.13.17](#)
- [CCX Media 9.6.17](#)
- [CCX Media 8.9.17](#)
- [CCX Media 6.26.17](#)
- [CCX Media 6.12.17](#)
- [Sun Post 4.26.17](#)
- [Sun Post 3.22.17](#)
- [CCX Media 3.13.17](#)
- [Sun Post 3.2.17](#)
- [Sun Post 11.22.16](#)



Recommended Changes to the System

Improve Existing

- Expand / Improve Disc Golf Area
- Expand / Improve Dog Park

Increase Quantity

- Full-Sized Rectangle Fields (+4)
- Pickleball Courts (+6)
- Various Sized Picnic Shelters
- Lighting on Large Fields



Recommended Changes to the System

New Additions

- Rentable Community Building with Restrooms (+5)
- Destination / Inclusive Play Area
- Outdoor Fitness Equipment
- Water Feature / Fountain (for Play and Aesthetics)
- Gathering Area for Food Truck / Farmer's Market Events
- Outdoor Performance Area / Great Lawn
- Community Ice Skating Rink with Refrigeration



Recommended Changes to the System

Reductions

- Baseball Fields (-1)
- Softball Fields (-4)
- Tennis Courts (-1)
- Hockey Rinks (-2)
- Warming House (-8)
- Large Performance Building (-1)



Assigning Parks to Categories

Review the function of each park in the overall park system

Natural Area
(8)

Little to no development

Neighborhood
(13)

Small park within a 10-minute walk

Community
(4)

Large Recreation Facilities

Destination
(2)

Unique / Signature Community Facilities

Natural Areas

Areas with little to no development

Focus is on Open Space

- Trails / Boardwalks
- Benches
- Interpretive Signage
- Community Gardens
- Nature Play Areas



Dakota County – Whitetail Woods Regional Park



Crystal Parks and Recreation

Natural Areas

Brownwood
Florida
Hagemeister
MAC Park

Memory Lane
Soo Line
Schutz
Twin Lake Shores

Natural Areas
(8)

Neighborhood
(13)

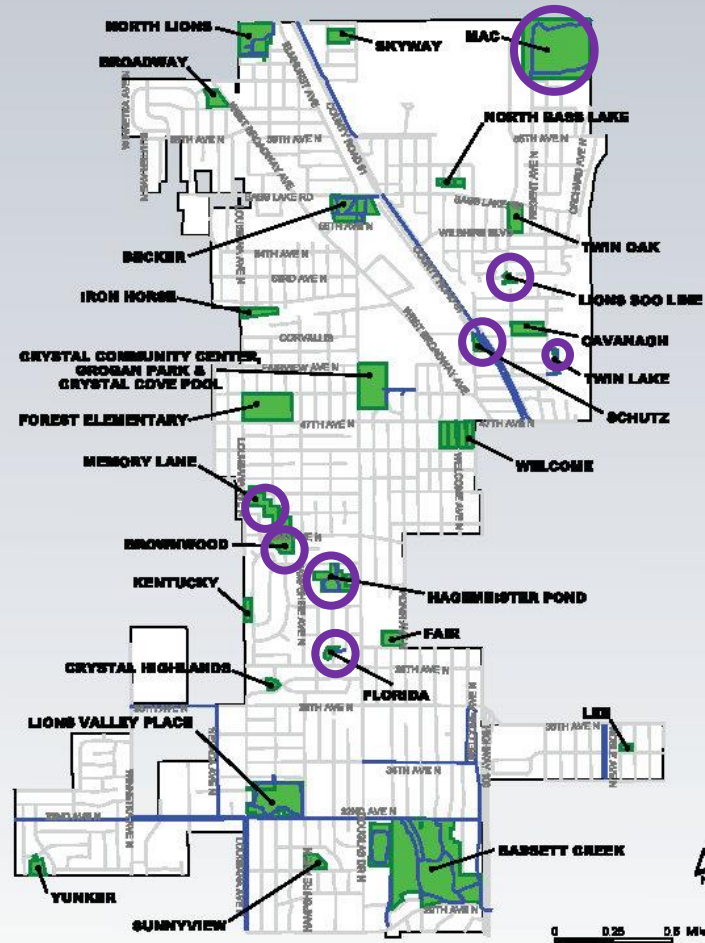
Crystal
Parks

Community
(4)

Destination
(2)

Crystal City Park Map

The City of Crystal has more than 240 acres dedicated to parks and open space. The city maintains 27 parks as well as numerous ball fields, courts, playgrounds, trails and activity areas.



Crystal City Parks are open daily from sunrise to 10 p.m. Please follow all regulations when visiting the parks:

- Dispose of all debris and litter in trash cans.
- Picnic fires are prohibited except in designated areas.
- Do not damage or harm park wildlife or plantlife.
- Dogs must be leashed with a leash shorter than 6 feet.
- Beer and liquor is prohibited except by permit.
- Do not damage or deface park property.
- No skating on tennis courts or playground equipment.
- Dog walkers must possess waste removing utensils.

For a complete list of regulations, visit www.crystalmn.gov/recreation/index.php, and click on Park Regulations.

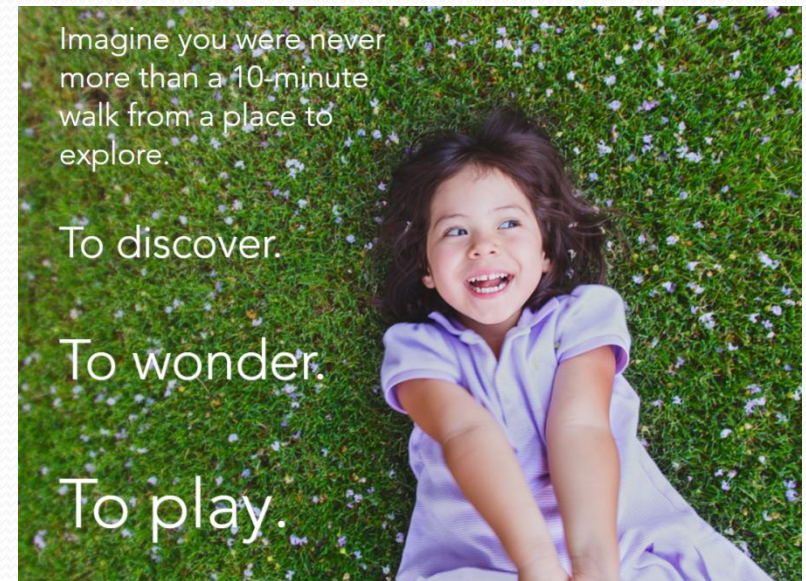


Neighborhood Parks

Small Park within a 10-minute walk

Focus is on neighborhoods

- Easy to walk to
- Play area in each park
- Open grass area
- Paved court for various games
- Picnic tables and benches
- Small picnic shelter in some



Trust for Public Land



Crystal Parks and Recreation

Neighborhood

Skyway
Broadway
North Bass Lake
Twin Oak
Iron Horse
Cavanagh
Forest

Kentucky
Fair
Crystal Highlands
Lee
Yunkers
Sunnyview

Natural Areas
(8)

Neighborhood
(13)

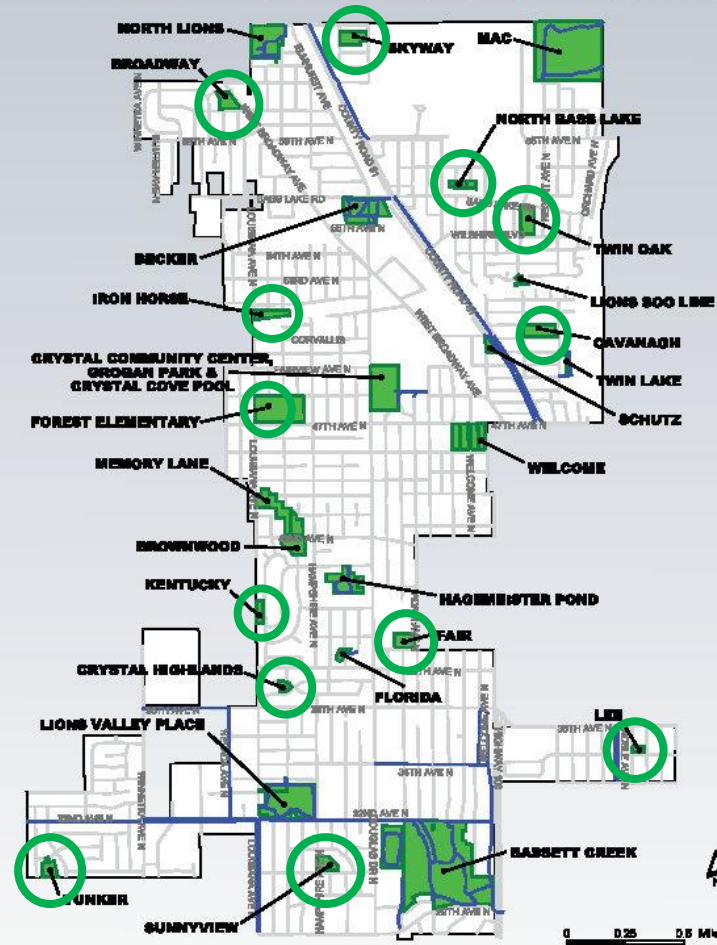
Crystal
Parks

Community
(4)

Destination
(2)

Crystal City Park Map

The City of Crystal has more than 240 acres dedicated to parks and open space. The city maintains 27 parks as well as numerous ball fields, courts, playgrounds, trails and activity areas.



Crystal City Parks are open daily from sunrise to 10 p.m. Please follow all regulations when visiting the parks:

- Dispose of all debris and litter in trash cans.
- Picnic fires are prohibited except in designated areas.
- Do not damage or harm park wildlife or plantlife.
- Dogs must be leashed with a leash shorter than 6 feet.
- Beer and liquor is prohibited except by permit.
- Do not damage or deface park property.
- No skating on tennis courts or playground equipment.
- Dog walkers must possess waste removing utensils.

For a complete list of regulations, visit www.crystalmn.gov/recreation/index.php, and click on Park Regulations.



Community Parks

Large Recreation Facilities with Parking Lots

Focus is on sports and community-level amenities

- Full-sized fields
- Full-sized court sports
- Lights on ball fields and courts
- Hockey rinks / sliding hills
- Restroom building / rental space
- Picnic shelters / sand volleyball / disc golf / dog park



Valley Place Park – City of Crystal



Crystal Parks and Recreation Community

North Lions
Welcome

Lions Valley Place
Bassett Creek

Natural Areas
(8)

Neighborhood
(13)

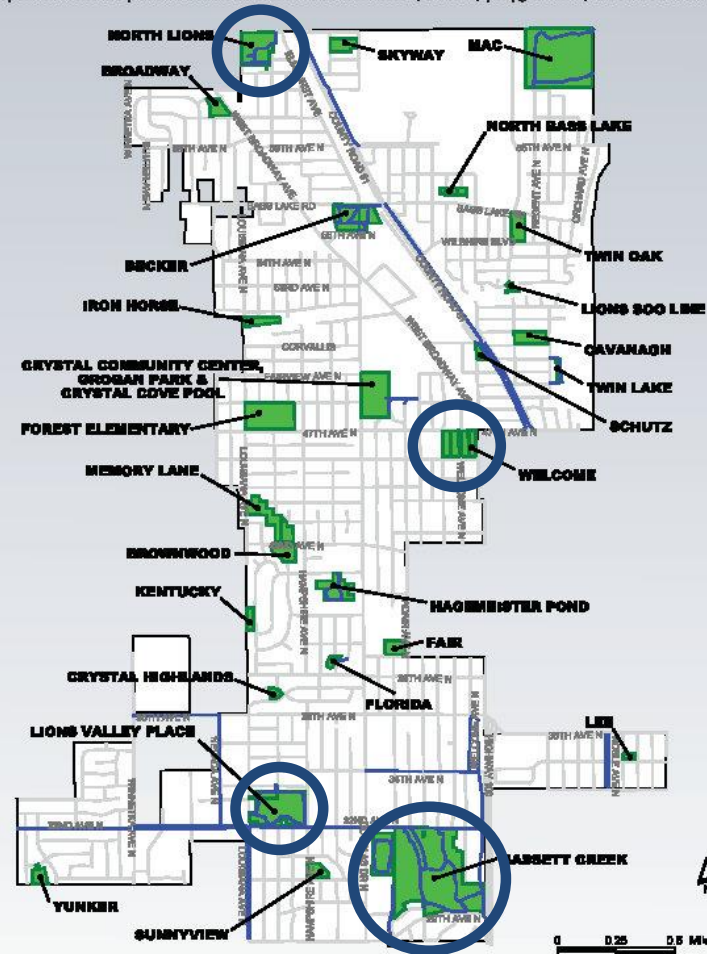
Crystal
Parks

Community
(4)

Destination
(2)

Crystal City Park Map

The City of Crystal has more than 240 acres dedicated to parks and open space. The city maintains 27 parks as well as numerous ball fields, courts, playgrounds, trails and activity areas.



Crystal City Parks are open daily from sunrise to 10 p.m. Please follow all regulations when visiting the parks:

- Dispose of all debris and litter in trash cans.
- Picnic fires are prohibited except in designated areas.
- Do not damage or harm park wildlife or plantlife.
- Dogs must be leashed with a leash shorter than 6 feet.
- Beer and liquor is prohibited except by permit.
- Do not damage or deface park property.
- No skating on tennis courts or playground equipment.
- Dog walkers must possess waste removing utensils.

For a complete list of regulations, visit www.crystalmn.gov/recreation/index.php, and click on Park Regulations.

Destination Parks

Unique or Signature Gathering Spaces

Focus is on year-round community activities

- Inclusive Play Area
- Water Feature / Fountain
- Ice Surface / Plaza Space
- Flexible Performance Area
- Community Center
- Aquatic Center



Madison's Place in Woodbury – Landscape Structures Design



Crystal Parks and Recreation

Destination

Becker Park

Grogan Park

Natural Areas
(8)

Neighborhood
(13)

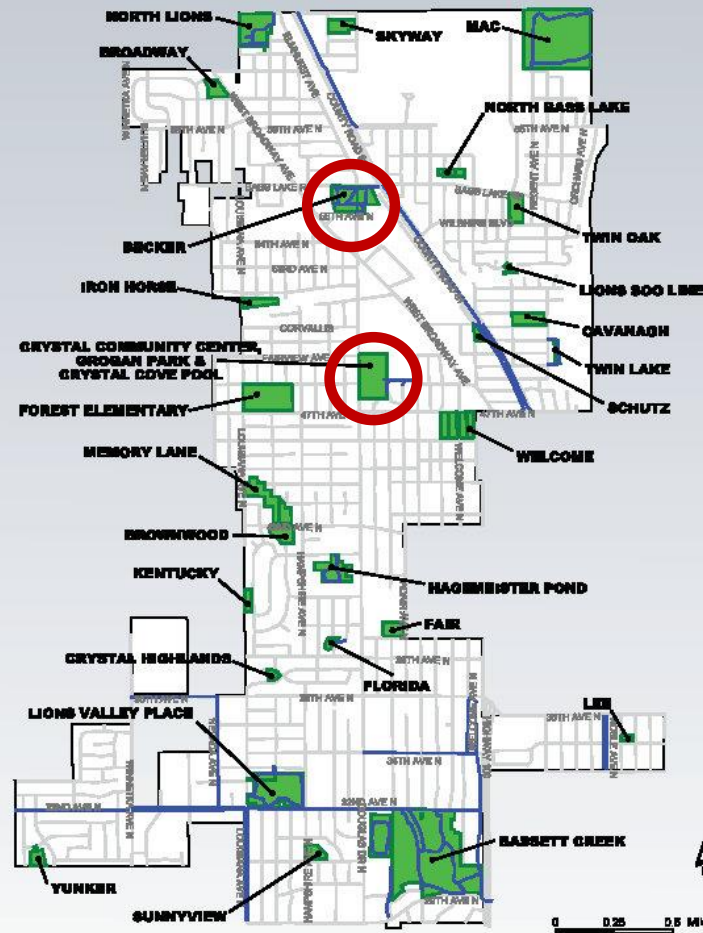
Crystal
Parks

Community
(4)

Destination
(2)

Crystal City Park Map

The City of Crystal has more than 240 acres dedicated to parks and open space. The city maintains 27 parks as well as numerous ball fields, courts, playgrounds, trails and activity areas.



Crystal City Parks are open daily from sunrise to 10 p.m. Please follow all regulations when visiting the parks:

- Dispose of all debris and litter in trash cans.
- Picnic fires are prohibited except in designated areas.
- Do not damage or harm park wildlife or plantlife.
- Dogs must be leashed with a leash shorter than 6 feet.
- Beer and liquor is prohibited except by permit.
- Do not damage or deface park property.
- No skating on tennis courts or playground equipment.
- Dog walkers must possess waste removing utensils.

For a complete list of regulations, visit www.crystalmn.gov/recreation/index.php, and click on Park Regulations.



Assigning Amenities Within Each Category

Primarily for Community and Destination Parks

Natural Area
(8)

Little to no development

Neighborhood
(13)

Small park within a 10-minute walk

Community
(4)

Large Recreation Facilities

Destination
(2)

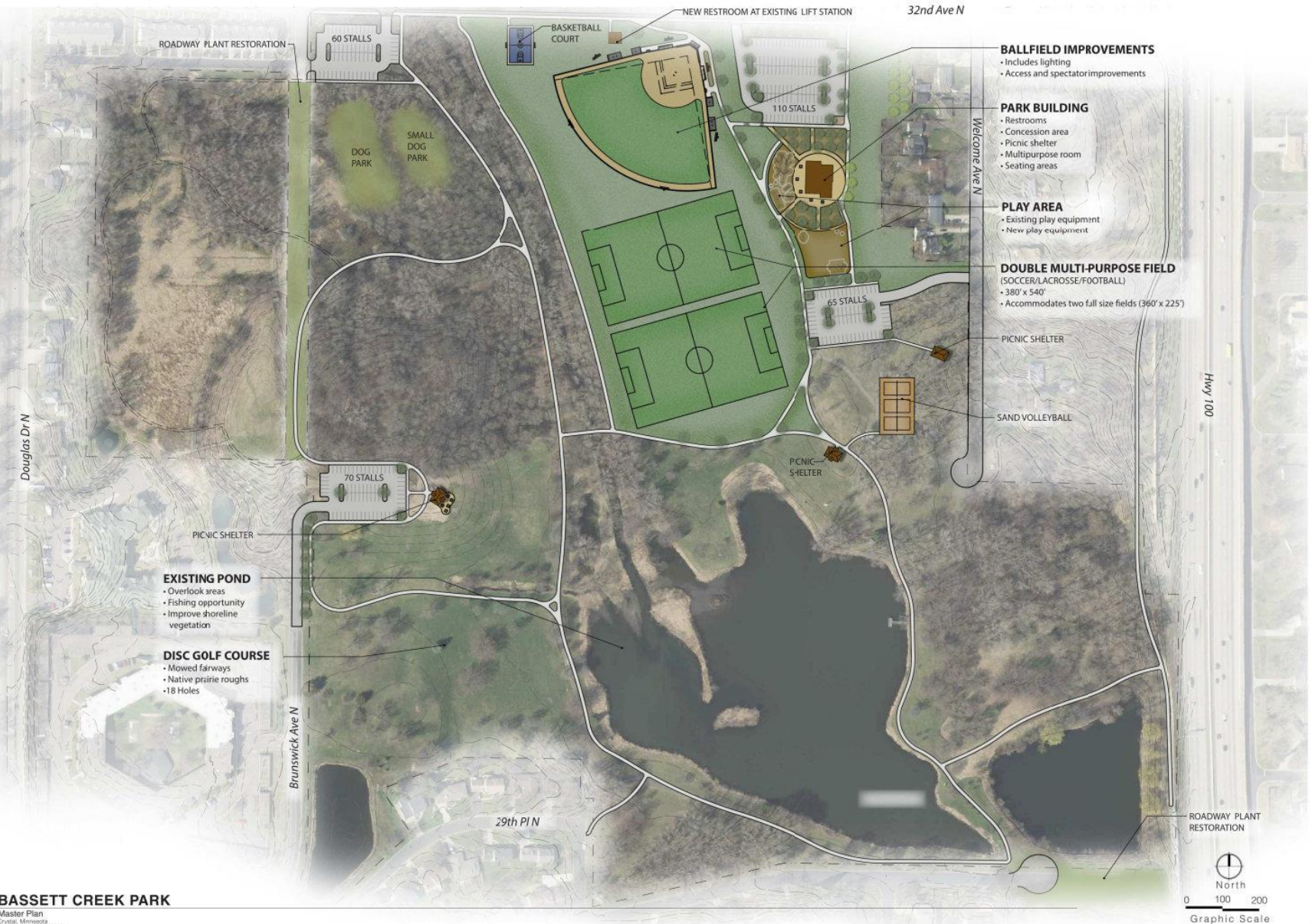
Unique / Signature Community Facilities



Location of Community Park Amenities

Sports Fields and Amenities	Bassett Creek	North Lions	Valley Place	Welcome
Baseball w/ Fence	1			
Basketball	1	1	1	1
Hockey Rink		1	2	1
Pickleball		6		
Rectangle - full	2	1		1
Restroom / Rental Bldg.	1	1	1	1
Softball w/ Fence			1	1
Sliding Hill		1	1	
Tennis			6	

Bassett Creek Park



BASSETT CREEK PARK

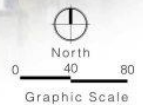
Master Plan
Crystal, Minnesota
08/09/2017 | 01726-025

North Lions Park

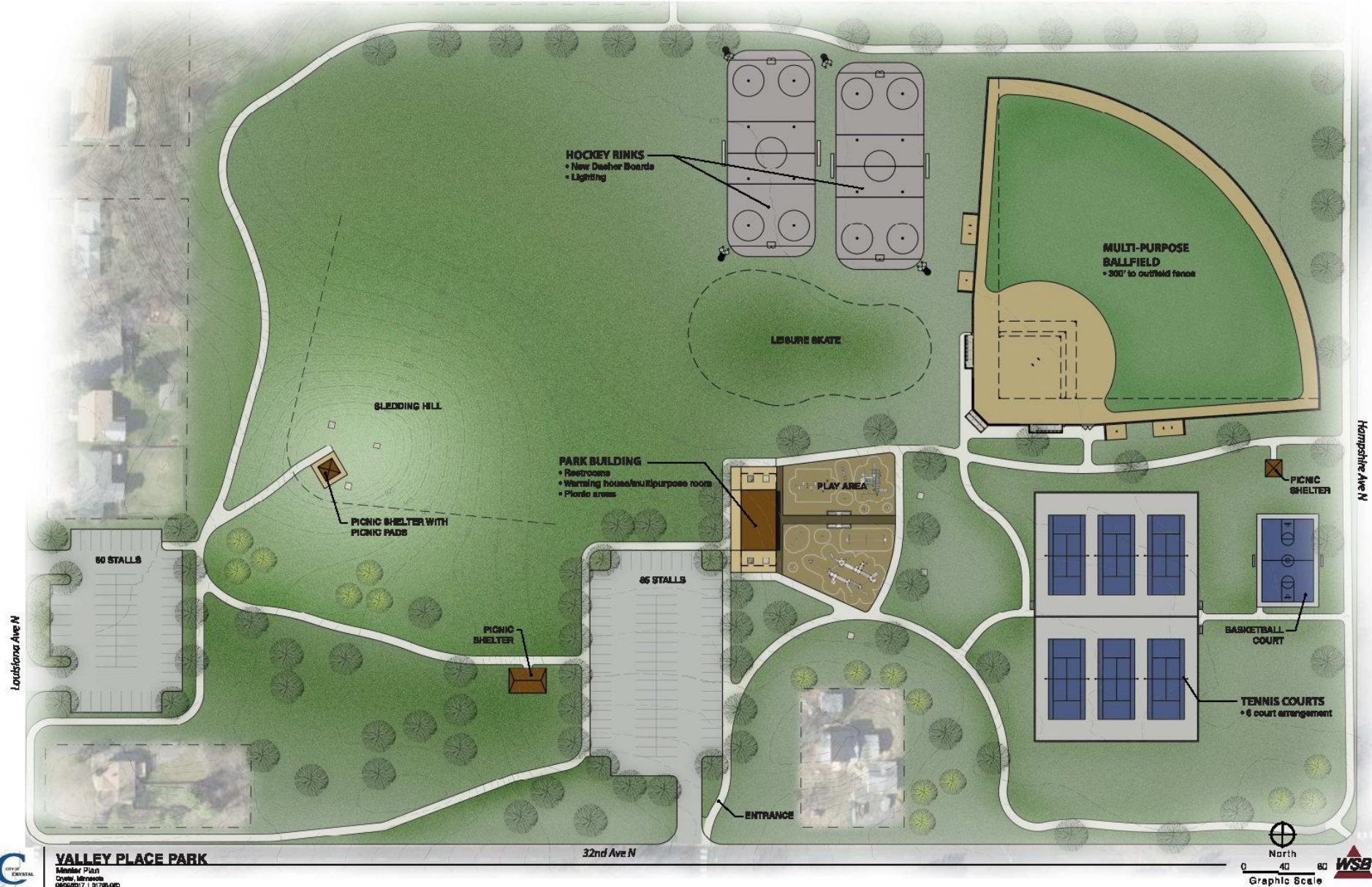


NORTH LION'S PARK

Master Plan
Crystal, Minnesota
06/06/2017 | 01726-020



Valley Place Park



Welcome Park

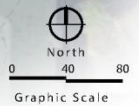




Location of Destination Park Amenities

Community Gathering Spaces	Becker Park	Grogan Park
Aquatic Center		1
Community Center		1
Community Events	1	1
Food Truck / Farmer's Market	1	
Ice Skating	1	
Inclusive Play Area	1	
Restroom / Rental Bldg.	1	1
Little League Complex		1
Outdoor Performance / Great Lawn	1	
Water Feature / Fountain	1	

Becker Park





Final Steps for Plan Document

- Park and Recreation Commission Recommendation
- City Council Adoption

Note:

- Final priorities set during budget process
- Final costs are determined during final design / bidding